

McKenzie Collection

Exmoor at Jackson's Grant- Lot 337

592 Exmoor Drive, Carmel, IN 46032



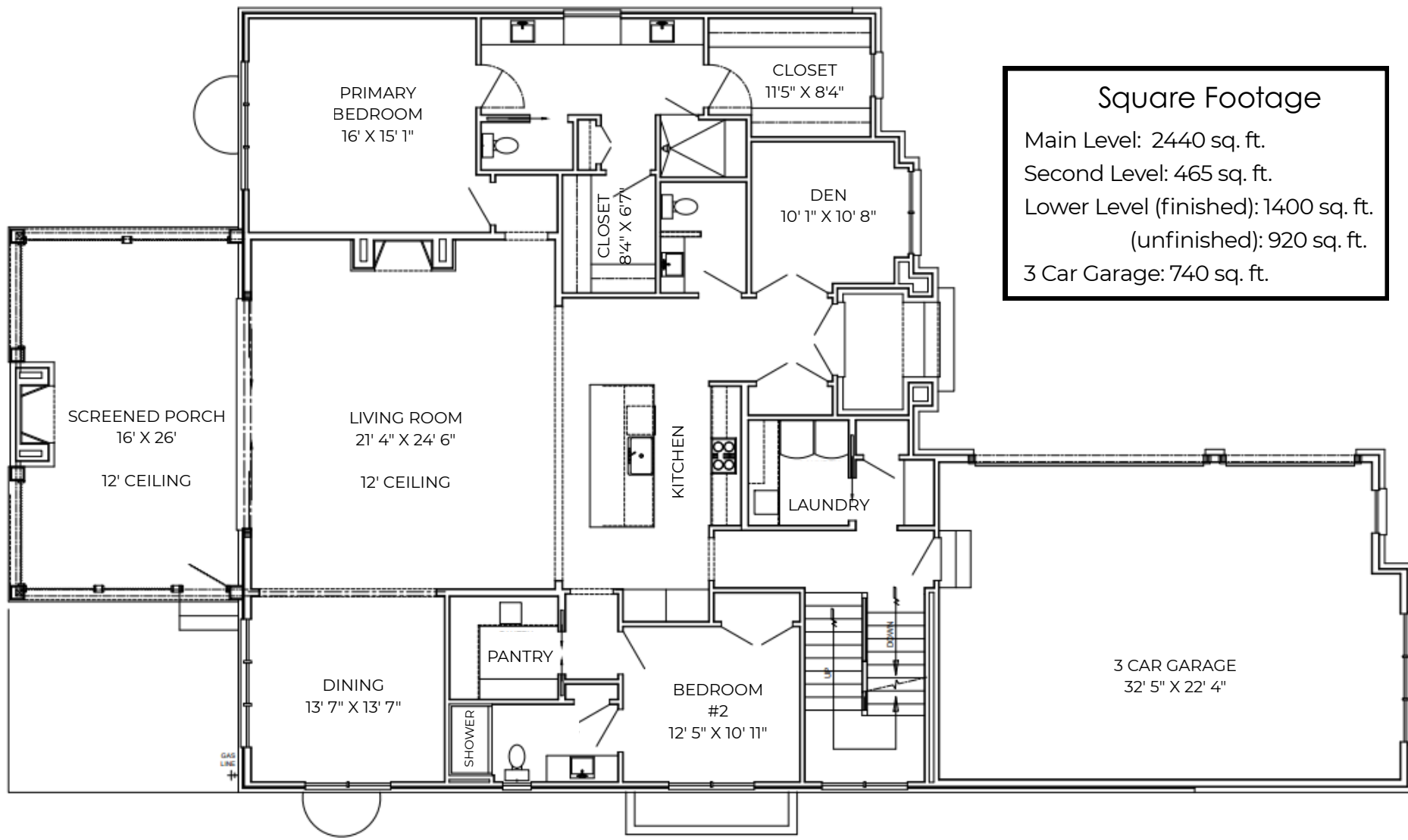
Crissy Holcomb
931-216-0356
crissy@mckenziecollection.com

*Square footages and dimensions are approximate and may vary in construction and depending on engineering and municipal requirements, other on-site conditions, or the standard of measurement used.



Exmoor at Jackson's Grant- Lot 337

main level

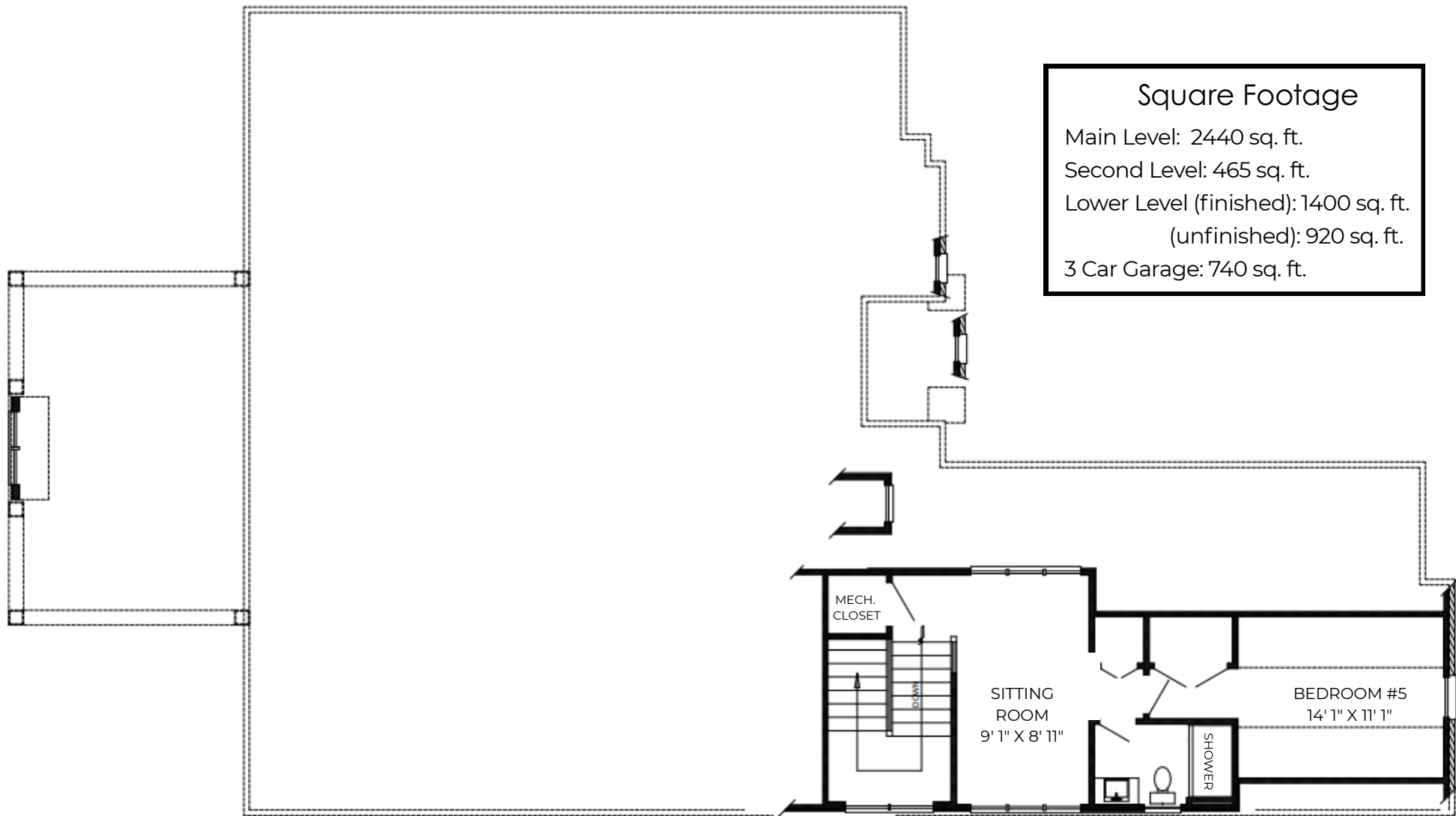


Crissy Holcomb
931-216-0356
crissy@mckenziecollection.com

*Square footages and dimensions are approximate and may vary in construction and depending on engineering and municipal requirements, other on-site conditions, or the standard of measurement used.



McKenzie Collection
Exmoor at Jackson's Grant- Lot 337
second level



Square Footage
Main Level: 2440 sq. ft.
Second Level: 465 sq. ft.
Lower Level (finished): 1400 sq. ft.
 (unfinished): 920 sq. ft.
3 Car Garage: 740 sq. ft.

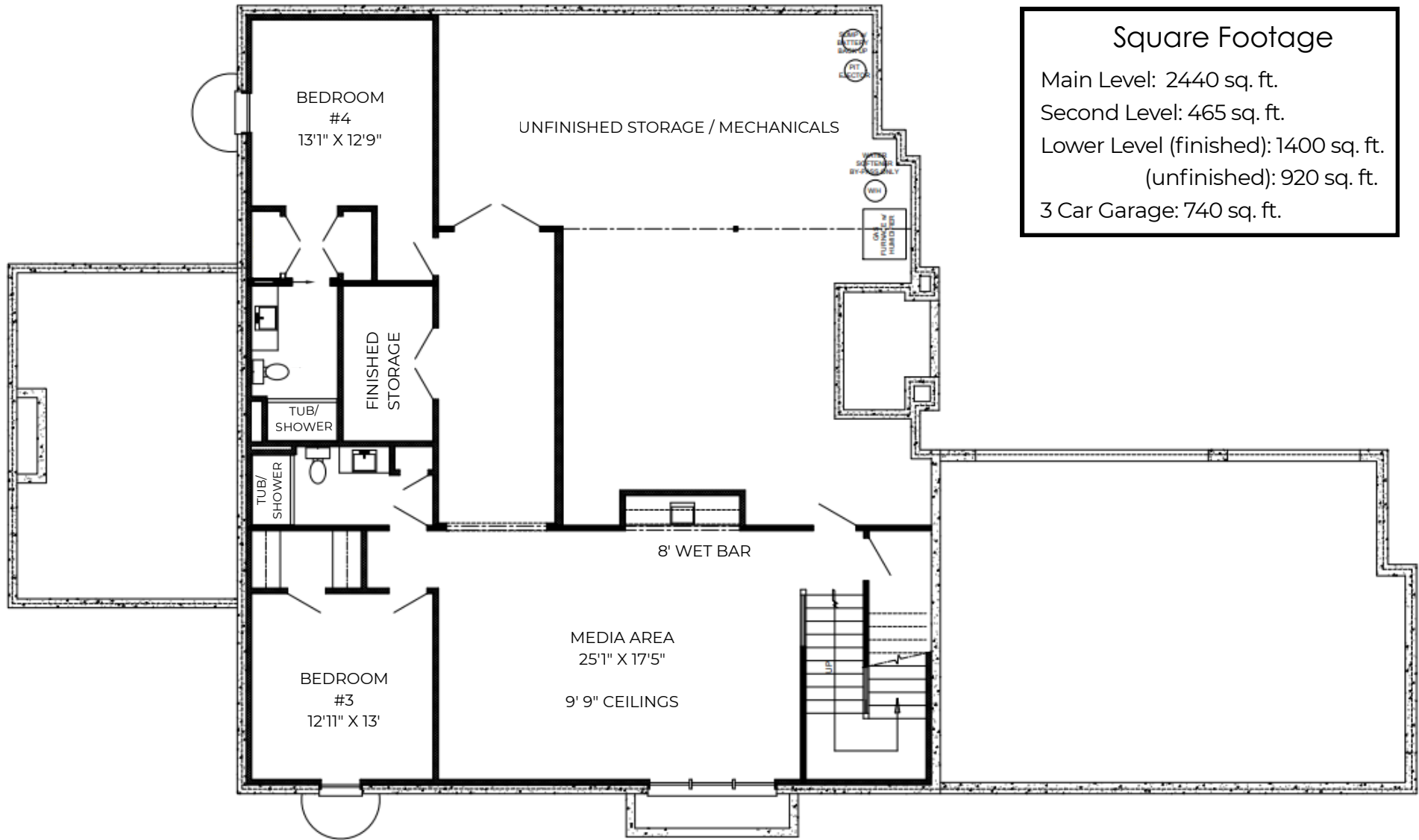


Crissy Holcomb
931-216-0356
crissy@mckenziecollection.com

*Square footages and dimensions are approximate and may vary in construction and depending on engineering and municipal requirements, other on-site conditions, or the standard of measurement used.



McKenzie Collection
Exmoor at Jackson's Grant- Lot 337
lower level



Square Footage
Main Level: 2440 sq. ft.
Second Level: 465 sq. ft.
Lower Level (finished): 1400 sq. ft.
(unfinished): 920 sq. ft.
3 Car Garage: 740 sq. ft.



Crissy Holcomb
931-216-0356
crissy@mckenziecollection.com

*Square footages and dimensions are approximate and may vary in construction and depending on engineering and municipal requirements, other on-site conditions, or the standard of measurement used.

