

# N20 at Holiday Farms -Zionsville

4355 Hamilton Run

Updated: 4.26.2026



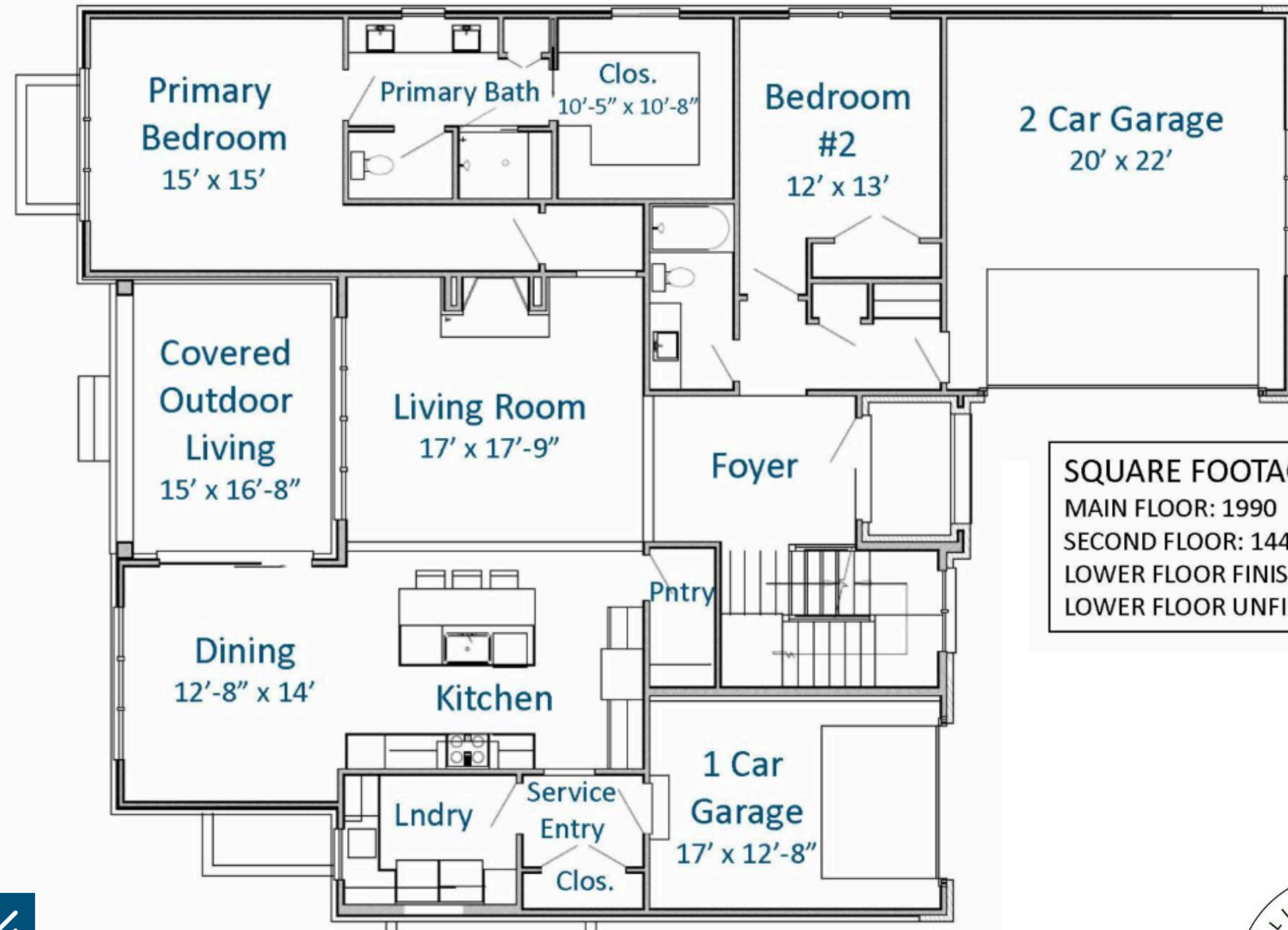
Crissy Holcomb  
(931)216-0356  
crissy@mckenziecollection.com



# N20 at Holiday Farms -Zionsville

## Main Floor Plan

Disclaimer: Square footages and dimensions are approximate and may vary in construction and depending on engineering and municipal requirements, other on-site conditions, or the standard of measurement used.



**SQUARE FOOTAGE:**  
MAIN FLOOR: 1990  
SECOND FLOOR: 1440  
LOWER FLOOR FINISHED: 1040  
LOWER FLOOR UNFINISHED: 867



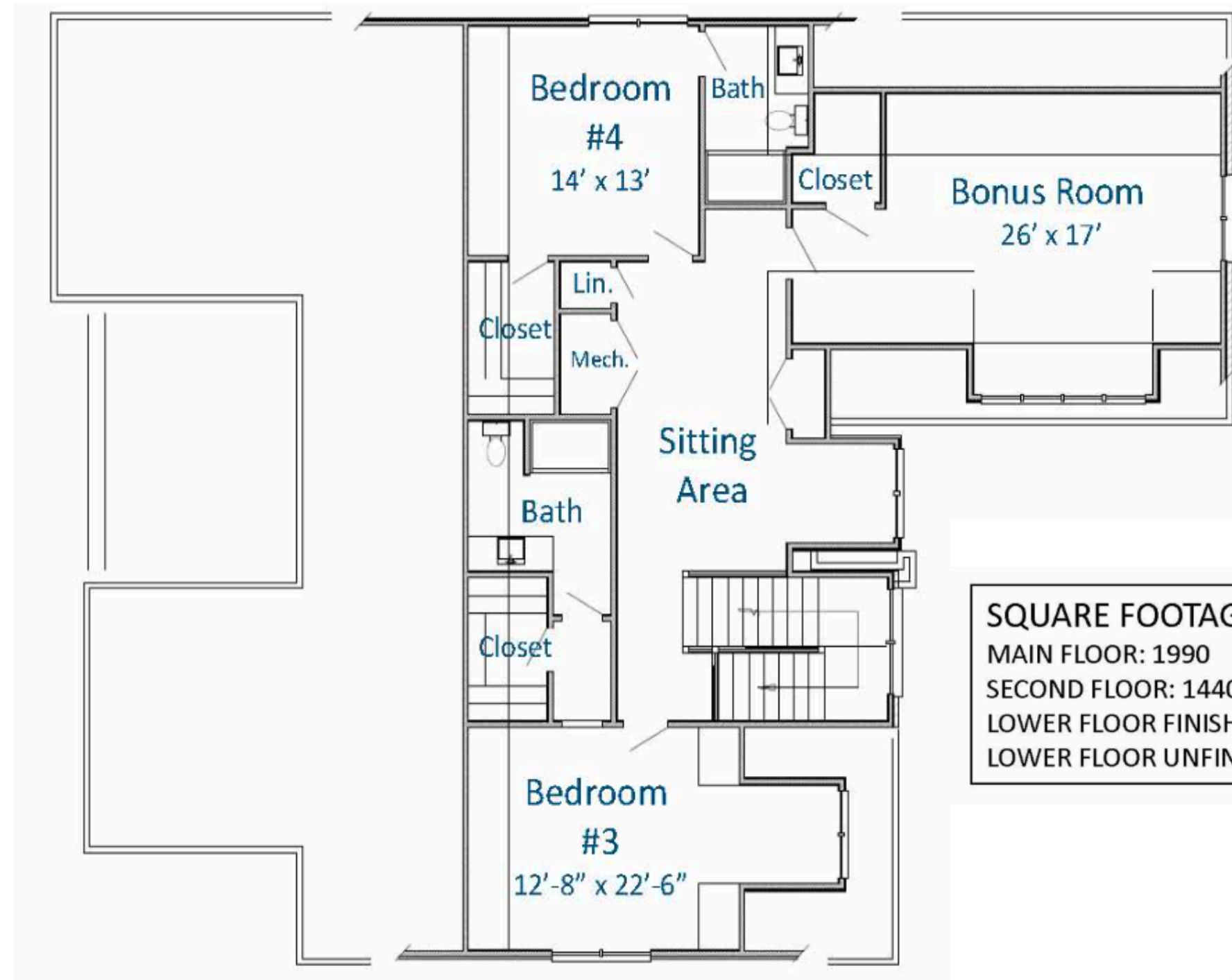
Crissy Holcomb  
(931)216-0356  
crissy@mckenziecollection.com



# N20 at Holiday Farms -Zionsville

## Upper Level Floor Plan

Disclaimer: Square footages and dimensions are approximate and may vary in construction and depending on engineering and municipal requirements, other on-site conditions, or the standard of measurement used.



**SQUARE FOOTAGE:**  
MAIN FLOOR: 1990  
SECOND FLOOR: 1440  
LOWER FLOOR FINISHED: 1040  
LOWER FLOOR UNFINISHED: 867



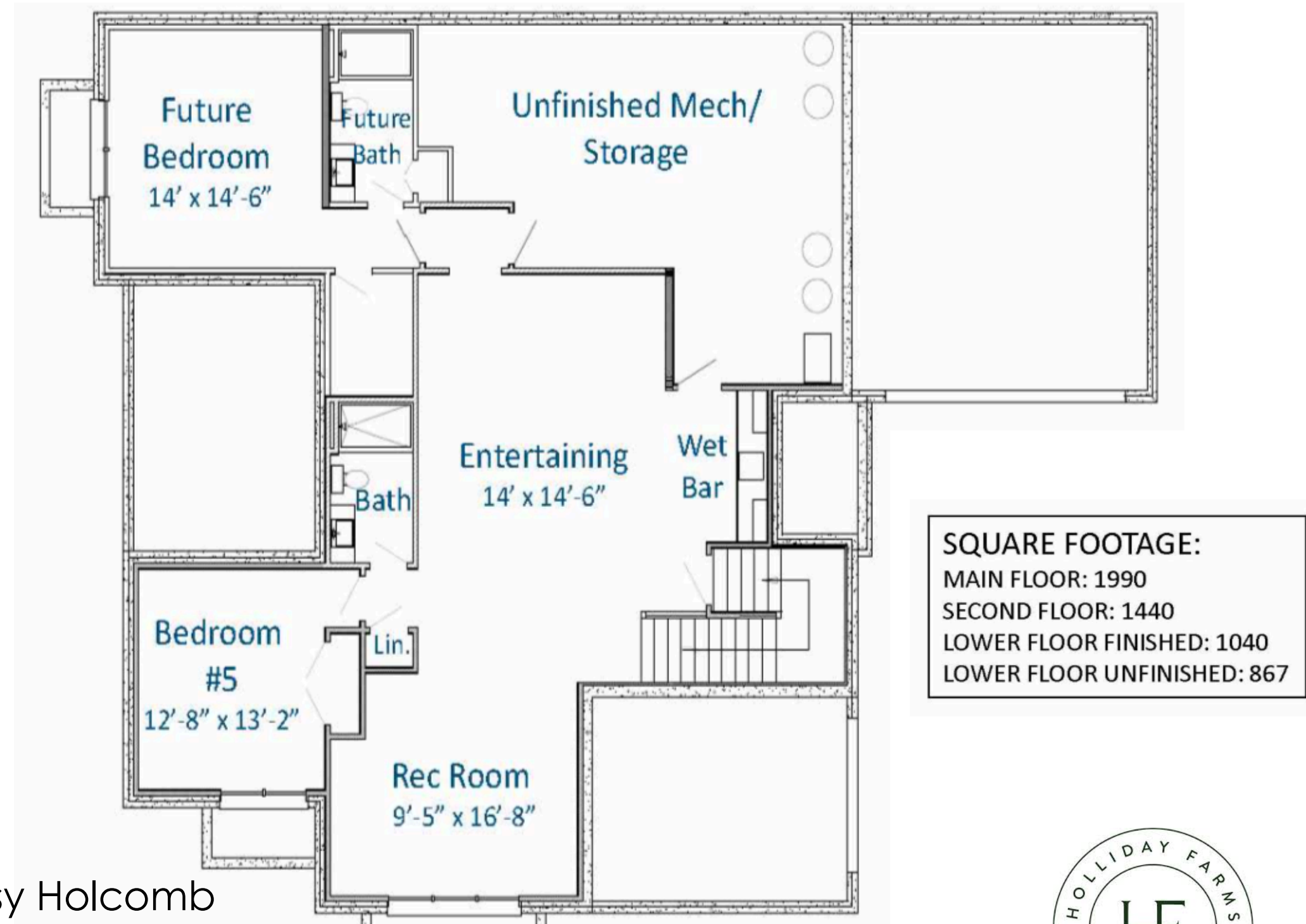
Crissy Holcomb  
(931)216-0356  
crissy@mckenziecollection.com



# N20 at Holiday Farms -Zionsville

## Lower Level Floor Plan

Disclaimer: Square footages and dimensions are approximate and may vary in construction and depending on engineering and municipal requirements, other on-site conditions, or the standard of measurement used.



Crissy Holcomb  
(931)216-0356  
crissy@mckenziecollection.com



# JG Village Spec #6 -Carmel

Available

Updated: 2.28.25

Disclaimer: Square footages and dimensions are approximate and may vary in construction and depending on engineering and municipal requirements, other on-site conditions, or the standard of measurement used.



Crissy Holcomb  
(931) 216-0356  
[crissy@mckenziecollection.com](mailto:crissy@mckenziecollection.com)



**JG VILLAGE**